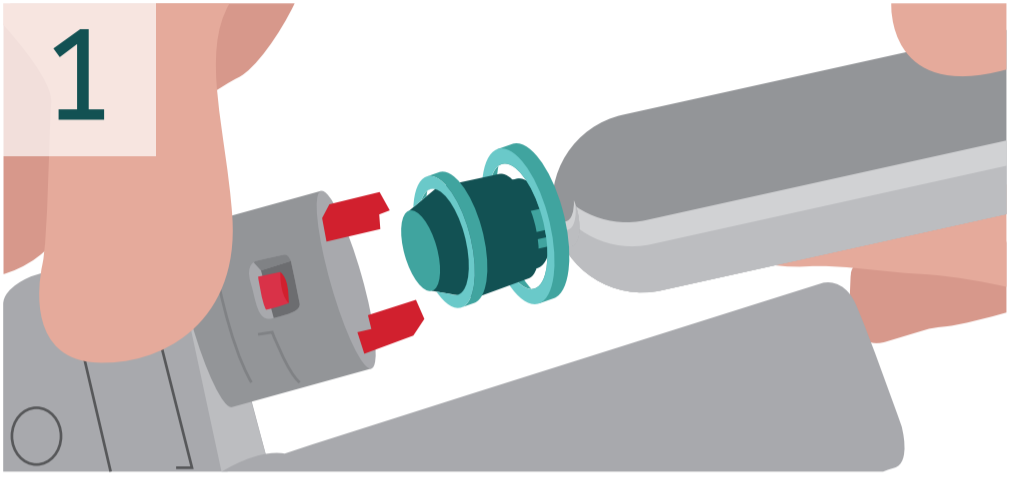


# ANNUAL BOBBIN REPLACEMENT

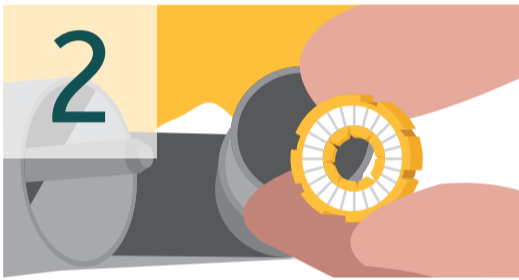
Perform the following annual service of Classic and Classic Deluxe type PFDs at the beginning of each boating season. To begin, place the inflatable PFD on a smooth, flat, clean surface and wipe off any water.

## *Mustang Classic Deluxe or 1F Halkey-Roberts Types*

*Unfasten the Velcro tabs and turn the PFD inside out to expose the inflator.*



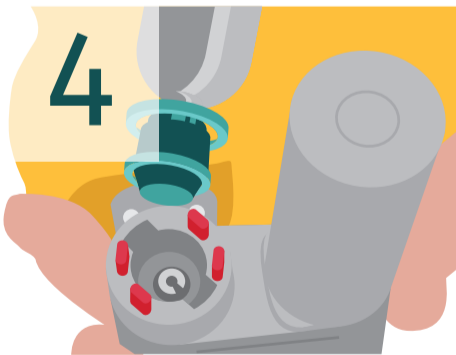
*Turn the cylinder 1/8 turn counter-clockwise and pull off.*



*Turn the auto capsule counter-clockwise to reveal the bobbin. Discard the bobbin.*



*Drop in a new bobbin, aligning the slots, and hand tighten the capsule until the butts up against the housing.*



*Reinstall the original cylinder if there is no evidence of corrosion or damage, a worm O-ring or a broken sensor ring that indicates the cylinder was fired. Align tabs on cylinder with inflator housing and twist clockwise 1/8 turn to a full stop.*



*Reposition the inflator under the inspection window. Ensure the service indicator is green. Red indicates that there is a problem with the bobbin or the auto capsule or cylinder is incorrectly fitted. Secure all Velcro tabs. Perform the Leak test. Follow the above steps to re-arm a PFD after inflation except install a new cylinder.*